

# HIKOKI

## ROTARY HAMMER

Item No.	Code No.	Description	No. Used	Remarks
1	306345	FRONT CAP	1	
2	306340	STOPPER RING	1	
3	374436	GRIP	1	
4	374437	BALL HOLDER	1	
5	374435	HOLDER PLATE	1	
6	322812	HOLDER SPRING	1	
7		NAME PLATE	1	
8	335259	OIL SEAL	1	
9	6805BB	BALL BEARING 6805	1	
10	322789	PUSHING BUTTON	1	
11	317223	PUSHING SPRING	1	
12	334011	CHANGE LEVER	1	
13	878885	O-RING (S-18)	1	
14	374618	GEAR COVER	1	
15	375016	GEAR COVER ASS'Y	1	INCLUD. 14, 17
16	335800	SPRING (E)	1	
17	608VVM	BALL BEARING 608VVC2PS2L	3	
18	374422	SHAFT HOLDER (B)	1	
19	335300	STEEL BALL D7.0 (10 PCS.)	1	
20	374426	CYLINDER	1	
21	335265	SECOND GEAR	1	
22	374430	SPRING (B)	1	
23	301679	WASHER (A)	2	
24	948310	RETAINING RING FOR D30 SHAFT	1	
25	335262	OIL SEAL (A)	1	
26	374431	HAMMER HOLDER (B)	1	
27	374427	HOLDER SLEEVE	1	
28	374432	SECOND HAMMER	1	
29	374429	HAMMER HOLDER (A)	1	
30	322805	DAMPER (A)	1	
31	322808	O-RING (C)	1	
32	324524	DAMPER HOLDER	1	
33	322807	STOPPER RING	1	
34	374443	STRIKER	1	
35	372816	O-RING	1	
36	372817	PISTON	1	
37	335793	PISTON PIN	1	
38	335794	PISTON WASHER	2	
39	374434	LOCK PLATE	1	
40	374440	SECOND PINION	1	
41	323182	CLUTCH SPRING	1	
42	375022	CLUTCH	1	
43	331315	WASHER	1	
44	374439	CHANGE PLATE (C)	1	
45	374438	SECOND SHAFT	1	
46	335249	RECIPROCATING BEARING	1	
47	374441	FIRST GEAR	1	
48	374442	BEARING WASHER	1	
49	335245	O-RING D72.2	1	
50	374433	INNER COVER	1	
51	334008	AIR CAP	1	
52	324543	FELT PACKING (A)	1	
53	322816	FELT PACKING	1	

\* ALTERNATIVE PARTS

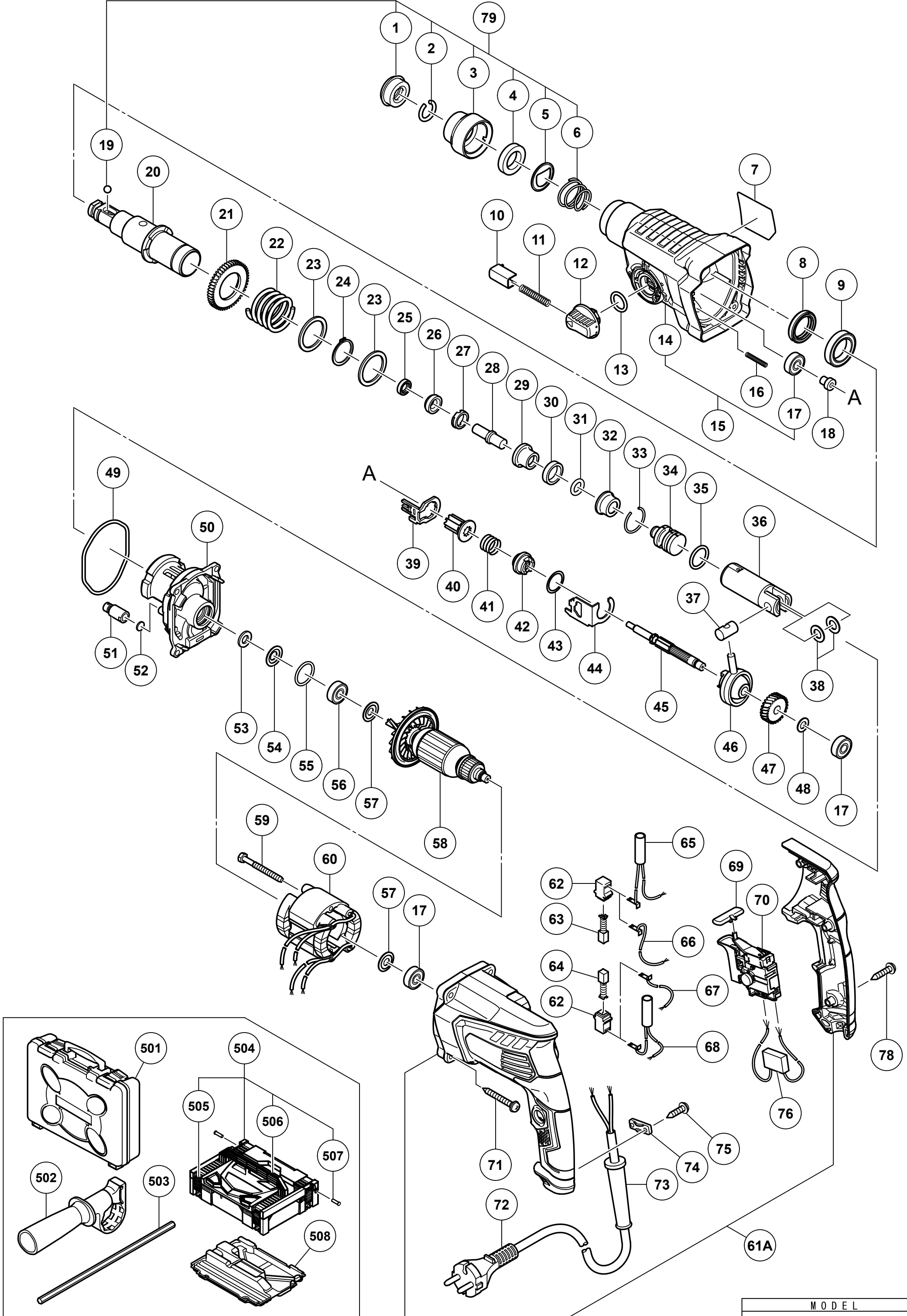
# HIKOKI

## ROTARY HAMMER

Item No.	Code No.	Description	No. Used	Remarks
54	322818	PACKING WASHER	1	
55	876796	O-RING (P-22)	1	
56	608DDM	BALL BEARING 608DD	1	
57	982631	WASHER (A)	2	
*58	361110C	ARMATURE (C) 110V	1	
*58	361110E	ARMATURE (C) 220V-230V	1	
*58	361110F	ARMATURE (C) 240V	1	
59	981824	HEX. HD. TAPPING SCREW D4X45	2	
*60	341031H	STATOR (C) 110V	1	
*60	341031C	STATOR (C) 110V (W/CR)	1	FOR TPE
*60	341031K	STATOR (C) 220V-230V	1	
*60	341031L	STATOR (C) 240V	1	
61A	376298	HOUSING SET	1	
62	955203	BRUSH HOLDER	2	
63	999041	CARBON BRUSH (1 PAIR)	1	
64	999072	CARBON BRUSH (AUTO STOP TYPE) (1 PAIR)	1	
65	374615	CHOKE COIL (BROWN)	1	FOR EUROPE, RUS, CHN, TPE
66	374613	INTERNAL WIRE (BROWN)	1	FOR UAE, HKG, THA, INA, IND, MAL
67	374612	INTERNAL WIRE (BLUE)	1	FOR UAE, HKG, THA, INA, IND, MAL
68	374614	CHOKE COIL (BLUE)	1	FOR EUROPE, RUS, CHN, TPE
69	322853	PUSHING BUTTON	1	
*70	374611	SWITCH 100V-127V	1	
*70	374610	SWITCH 220V-240V	1	
71	301654	TAPPING SCREW (W/FLANGE) D5X35	4	
*72	500247Z	CORD	1	(CORD ARMOR D8.8)
*72	500234Z	CORD	1	(CORD ARMOR D8.8) FOR INA, IND
*72	500423Z	CORD	1	(CORD ARMOR D8.8) FOR UAE, HKG (220V), MAL
*72	930051	CORD	1	(CORD ARMOR D10.1) FOR HKG (110V)
*72	500468Z	CORD	1	(CORD ARMOR D8.8) FOR THA
*72	500496Z	CORD	1	(CORD ARMOR D8.8) FOR CHN
*72	323974	CORD	1	(CORD ARMOR D10.1) FOR TPE
*73	953327	CORD ARMOR D8.8	1	
*73	938051	CORD ARMOR D10.1	1	
74	937631	CORD CLIP	1	
75	984750	TAPPING SCREW (W/FLANGE) D4X16	2	
76	930039	NOISE SUPPRESSOR	1	FOR EUROPE, RUS, CHN, TPE
78	301653	TAPPING SCREW (W/FLANGE) D4X20 (BLACK)	3	
79	375363	GRIP SET	1	INCLUD. 1-6, 19
		STANDARD ACCESSORIES		
501	374619	CASE	1	
502	324548	SIDE HANDLE	1	
503	303709	DEPTH GAUGE	1	
504	337739	CASE ASS'Y (STACKABLE 1)	1	INCLUD, 505-507
505	336472	LATCH	4	
506	336473	HANDLE	1	
507	336474	HINGE	2	
508	337741	INNER TRAY	1	
		OPTIONAL ACCESSORIES		
601	306885	DUST COLLECTOR (B) ASS'Y	1	INCLUD. 602, 610
602	986802	DUST COLLECTOR ASS'Y	1	INCLUD. 603-609
603	986803	DUST COVER	1	
604	986804	SEAL COVER	1	
605	948310	RETAINING RING FOR D30 SHAFT	1	

\* ALTERNATIVE PARTS





MODEL  
DH24PH2